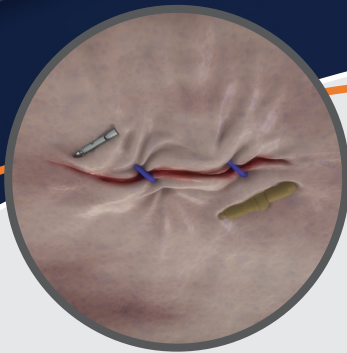
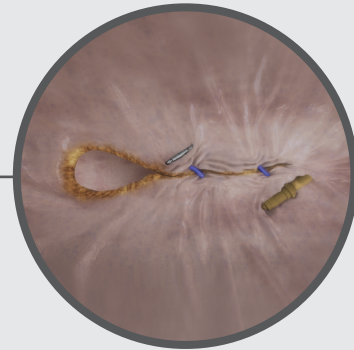


OverStitch™  
Endoscopic Suturing System

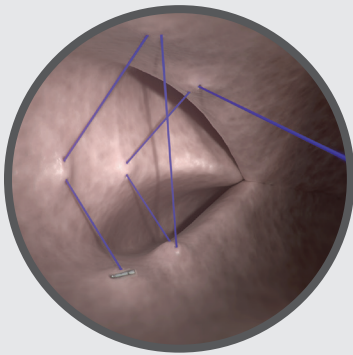
OverStitch Sx™  
Endoscopic Suturing System



Defect Closures



Outlet Revision



Large Area Tissue  
Approximation

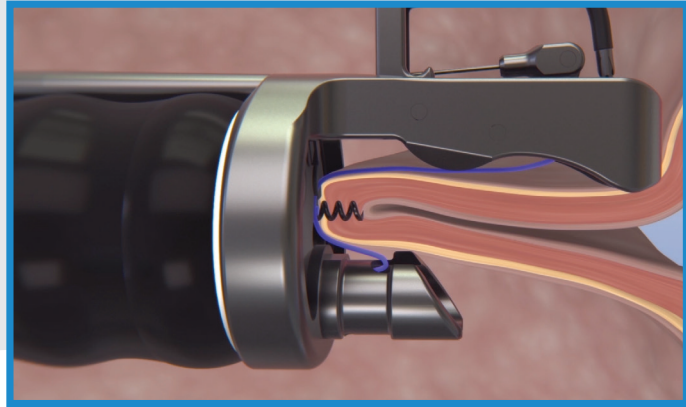
**Transforming**  
therapeutic endoscopy

**Complete your treatment options without the constraints of defect size, construct stability, or endoscope availability.**

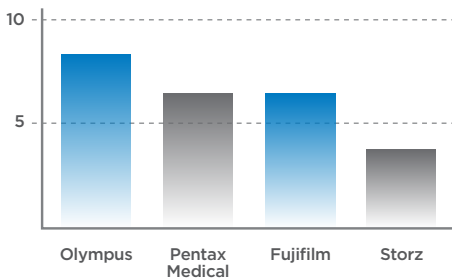
The OverStitch and OverStitch Sx Endoscopic Suturing Systems are transforming therapeutic endoscopy by enabling physicians to place full thickness sutures and perform more advanced endolumenal procedures.

Customizing suture patterns allows for stable tissue approximation for a broad range of advanced gastrointestinal procedures, without the limitation of implant size or scope selection.

**Full Thickness Suturing**

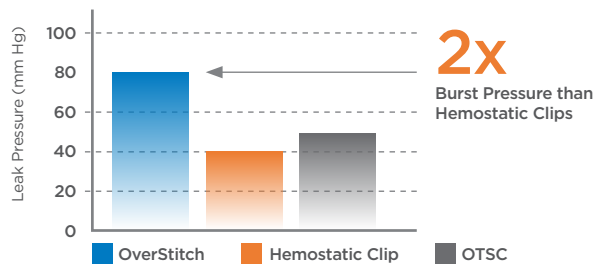


**OverStitch Sx Compatible Single Channel Scopes**



**Compatible with over 20 single-channel flexible endoscopes and 4 platforms**

**Endolumenal Leak Pressure\***



**Treat larger defects without compromising construct stability**

Product Family	Code	Description	Package Qty
<b>OverStitch™</b>	ESS-G02-160	OverStitch™ Endoscopic Suture System	3 Units
	ESS-G02-SX1	OverStitch Sx™ Endoscopic Suturing System	3 Units
	PLY-G02-020-APL	OverStitch™ 2-0 Polypropylene Suture	12 Units
	PDO-G02-020	OverStitch™ 2-0 Polydioxanone Suture	12 Units
	CNH-G01-000	OverStitch™ Suture Cinch	6 Units
	THX-165-028	OverStitch™ Tissue Helix	6 Units
<b>Accessories</b>	OVT-027-160	OverTube™ Endoscopic Access System	3 Units
	ES26165	Ensizor® Endoscopic Scissors (165cm length)	3 Units
	ES26235	Ensizor® Endoscopic Scissors (235cm length)	3 Units



To learn more about OverStitch visit:  
**OverStitch.com**

OverStitch Sx (TM) is a trademark of Apollo Endosurgery, Inc. Copyright (C)2020 Apollo Endosurgery, Inc. All rights reserved. Caution: Federal law (USA) restricts this device to sale by or on the order of a physician. The Apollo Endosurgery Sx (TM) Endoscopic Suture System is intended for endoscopic placement of suture(s) and approximation of soft tissue. \*Data on file at Apollo. All other trademark terms are property of their respective owners.