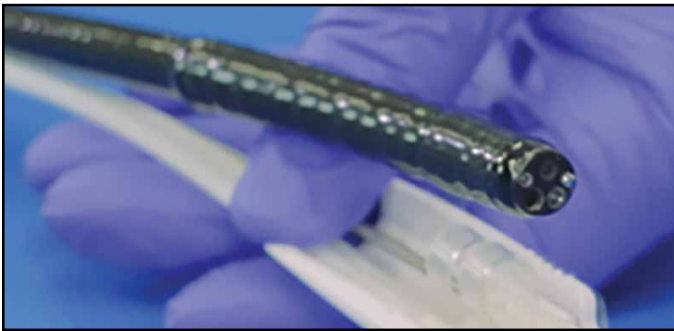


QUICK REFERENCE GUIDE - DEVICE ASSEMBLY



1. Prior to assembling device, the distal end of endoscope must be clean, dry and free of any lubricants.



2. Pass the endoscope between the Actuation Catheter and Catheter Sheath, from the Handle side of the device.



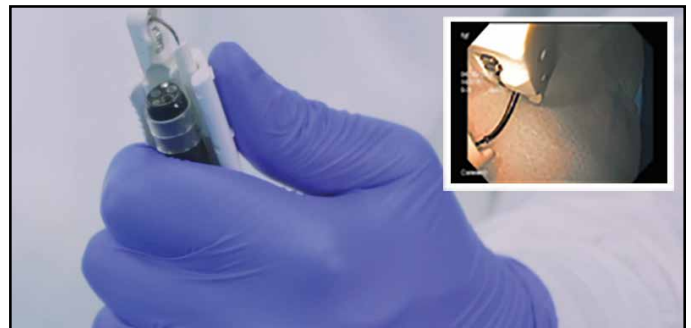
3. Slide the Needle Driver Handle collar up the endoscope until device sits firm and channel ports sit near endoscope port.



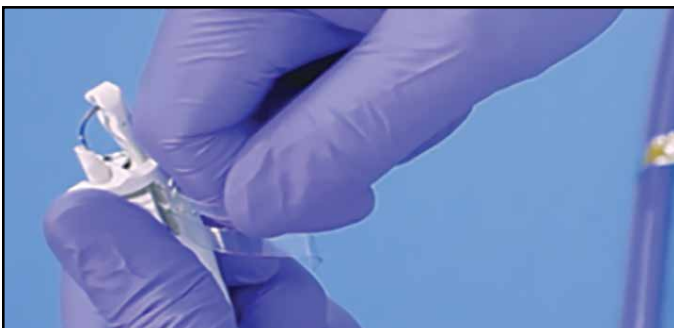
4. Wrap the blue Handle Strap around and over endoscope channel port. Secure tail onto white peg.



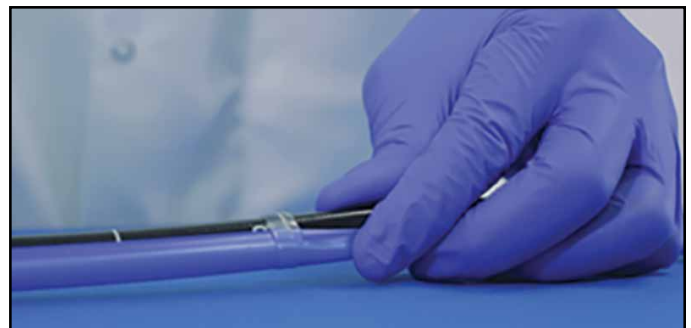
5. Fully insert endoscope through clear Endcap Strap loops. Insert until endoscope face touches the Overhang Stop feature on Endcap Clip.



6. If needed, rotate Endcap on endoscope distal end to achieve desired orientation. Confirm final orientation on monitor.



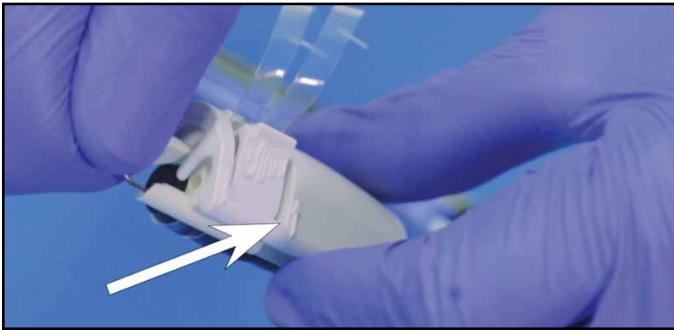
7. With your thumb on the Apollo logo of Endcap clip. Begin with pulling strap 1; pull straps 1 and 2 perpendicular to Endcap to create a watertight seal.



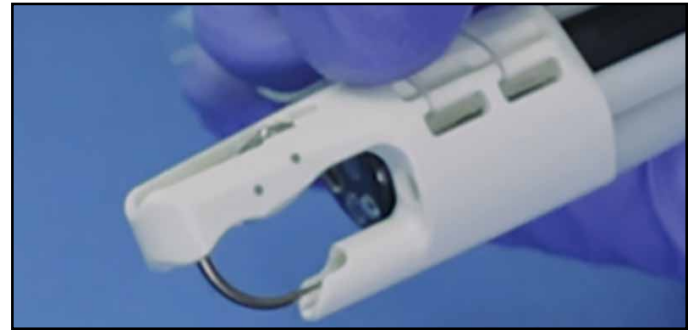
8. While keeping distal endoscope straight, start distally and moving proximally, secure Sheath to endoscope using Sheath Straps.

OverStitch Sx™

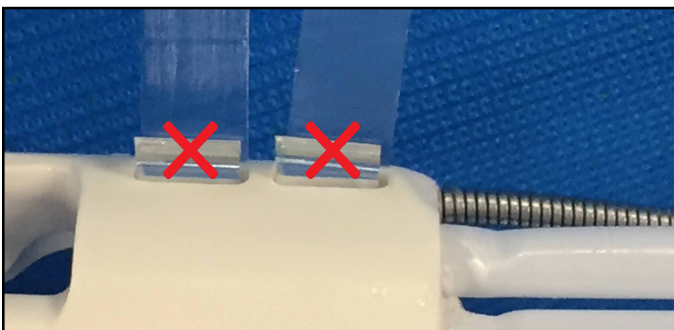
Endoscopic Suturing System



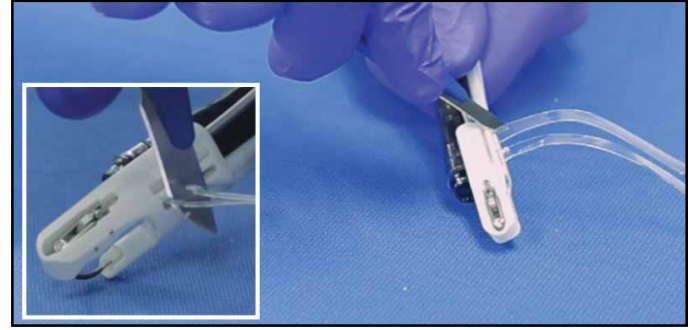
9. Remove Endcap Clip from the Endcap by twisting counter-clockwise as indicated by arrows.



10. Confirm Endcap strap stops are recessed to the Endcap surface. Re-tighten straps as needed.



11. If the strap stops are prominent, push in with thumbs and reload the Endcap Clip. Re-tighten straps while pressing the Apollo button.

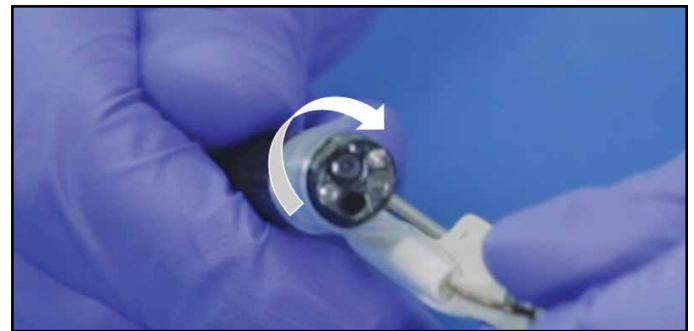


12. Use surgical blade to trim excess length of Endcap Straps flush with Endcap surface.

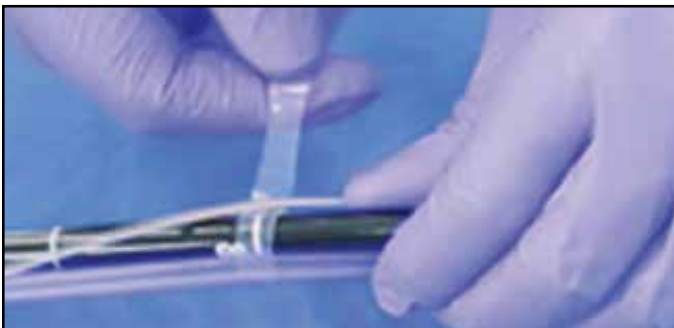
QUICK REFERENCE GUIDE - DEVICE DISASSEMBLY



1. Use surgical blade to cut the Endcap Straps through long vertical slot on side of Endcap.



2. Twist Endcap clockwise to remove from endoscope.



3. Unwrap each Sheath Strap along the endoscope.



4. Finally, remove the Handle Strap and slide Handle bracket off the endoscope.